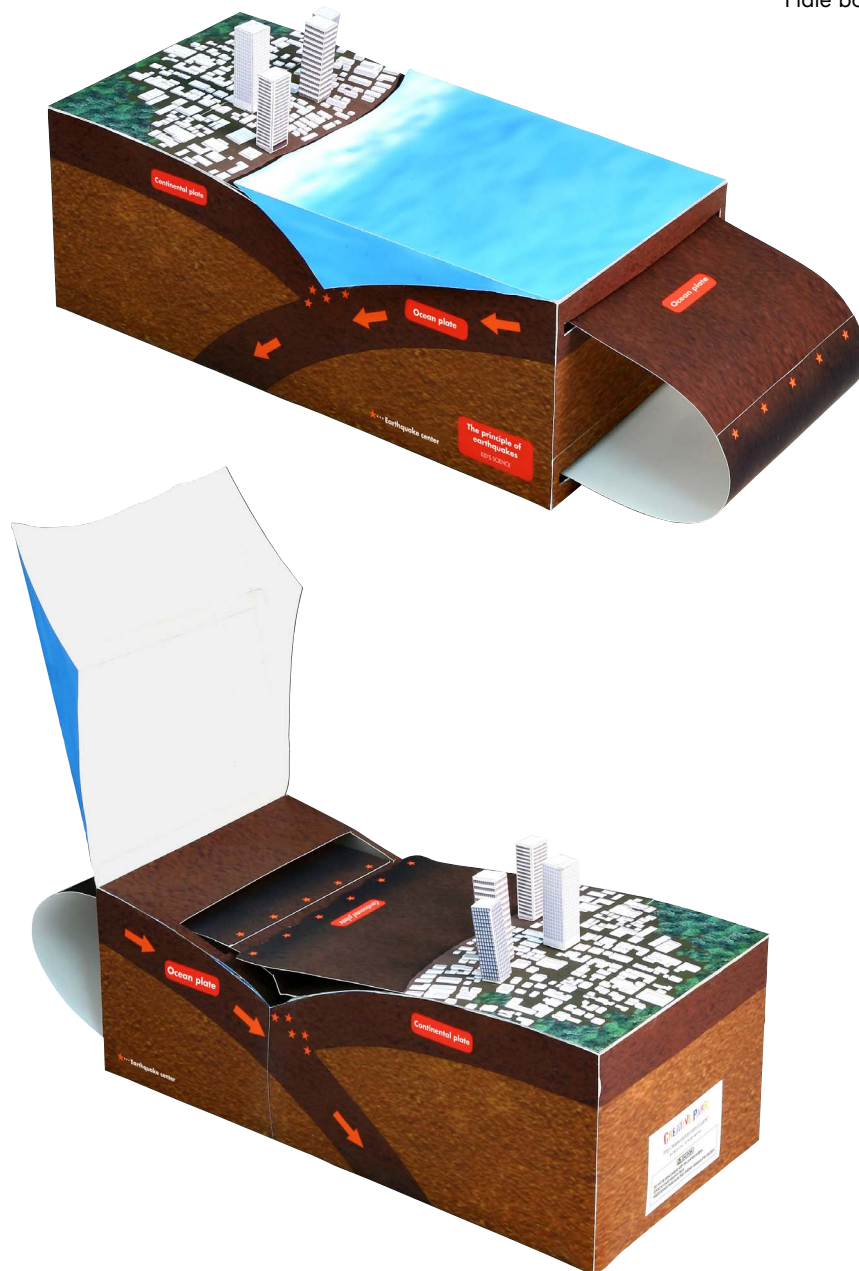


The principle of earthquakes

Plate boundary- type earthquake

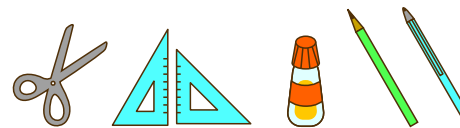
An earthquake is a phenomenon in which a normally solidly attached subterranean ground or rock bed suddenly shifts with at a certain boundary. It also means quaking of the ground surface caused by this shift. A plate-type earthquake is also called an ocean-type earthquake, which occurs at a boundary between different plates. This earthquake occurs when a plate pushed up by the other plate that starts to slide underneath the plate springs back because it can no longer absorb the strain, and it is repeated in a certain cycle unless a significant change occurs in the actions of the Earth. In the case of Japan, most of the earthquakes are ocean-type because most of the boundaries of the plates are under the sea. The Great Kanto Earthquake, Tokachi offshore earthquakes and other M8 class earthquakes are of this type.



Assembly tip

- Writing the number of each section on its back side before cutting out the sections is highly recommended. (* This way, you can be sure which section is which even after cutting out the sections.)
- Fold and crease mountain folds and valley folds before applying glue.
- Take your time to cut out each piece carefully.
- Trace along the folds with a ruler and an exhausted pen (no ink) to get a sharper, easier fold.
- When applying glue to large areas, take care to prevent warping of paper that may be caused by over-application of glue. Apply small amounts of glue around the peripheral of the piece or use dual-sided tape to minimize warping.

Necessary utensils



scissors, set square, glue, pencil, used ballpoint pen

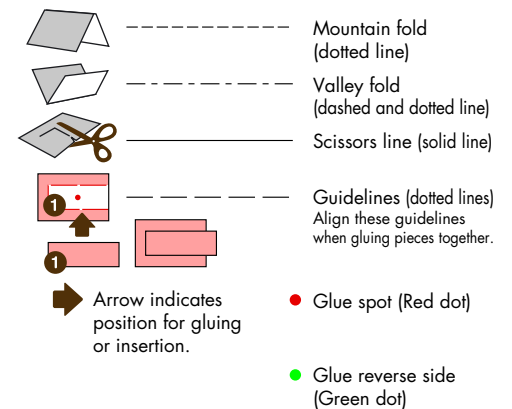
Caution

- Please read the Assembly Instructions carefully, and assemble in order as shown on the pattern sheets.
- This papercraft involves using glue, scissors, and other utensils and materials that may be dangerous to young children. Please work somewhere out of reach of young children.

Pattern

Sixteen A4 sheets (No. 1 to No. 16)

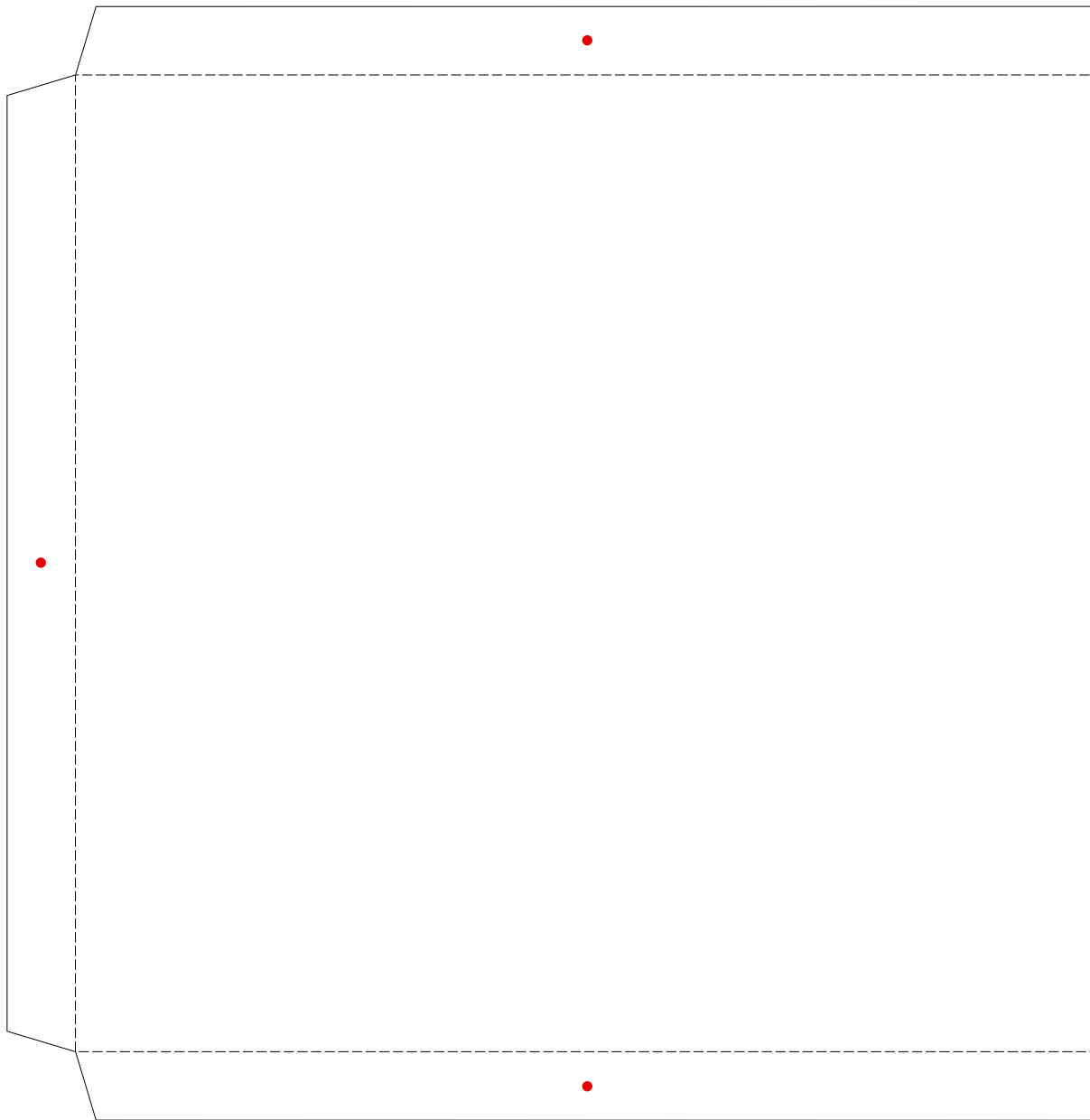
Notation Key



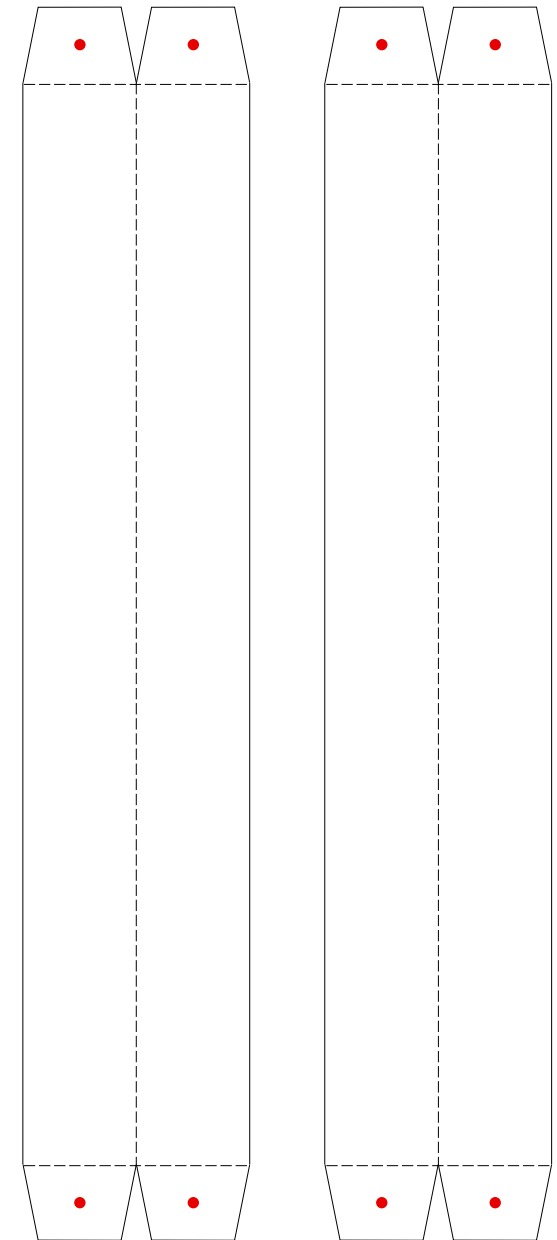
* The following are used in the assembly instructions.

Indicates reverse side of paper.

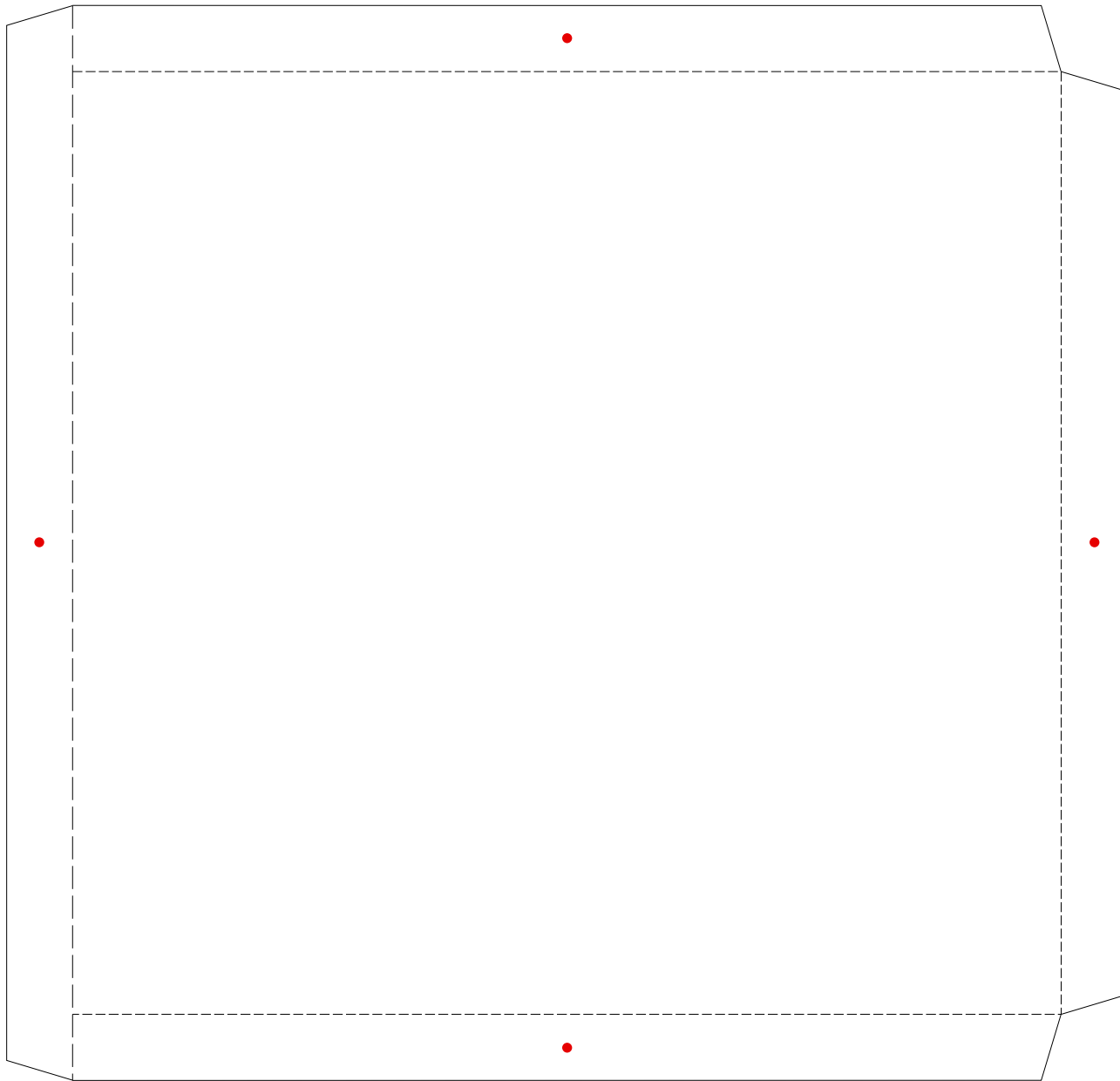
Main body



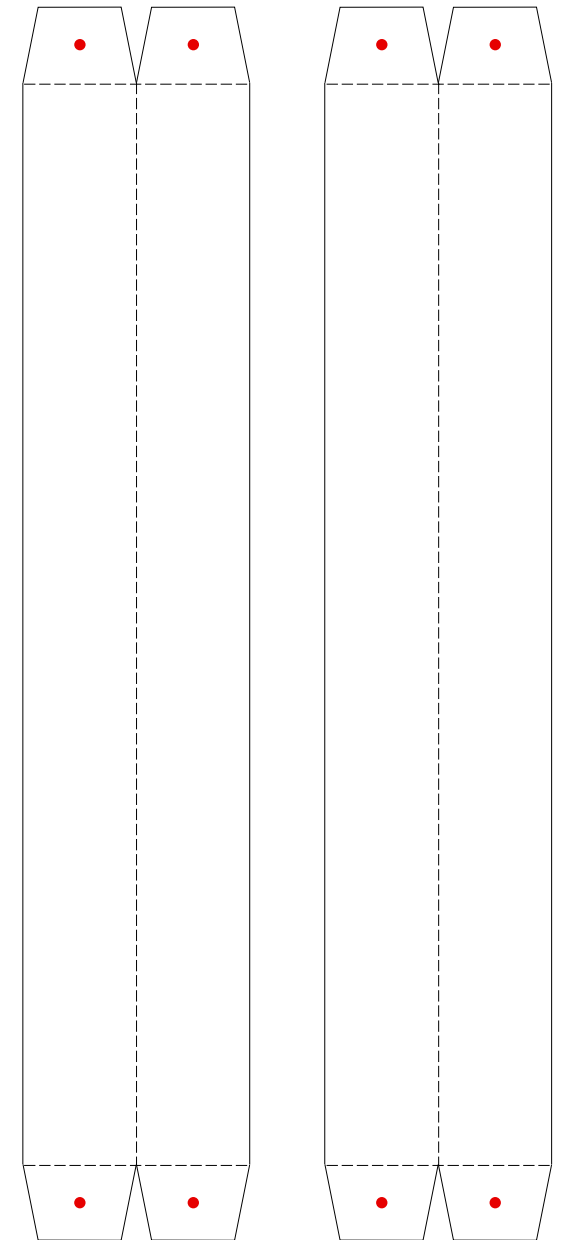
Reinforcement part C



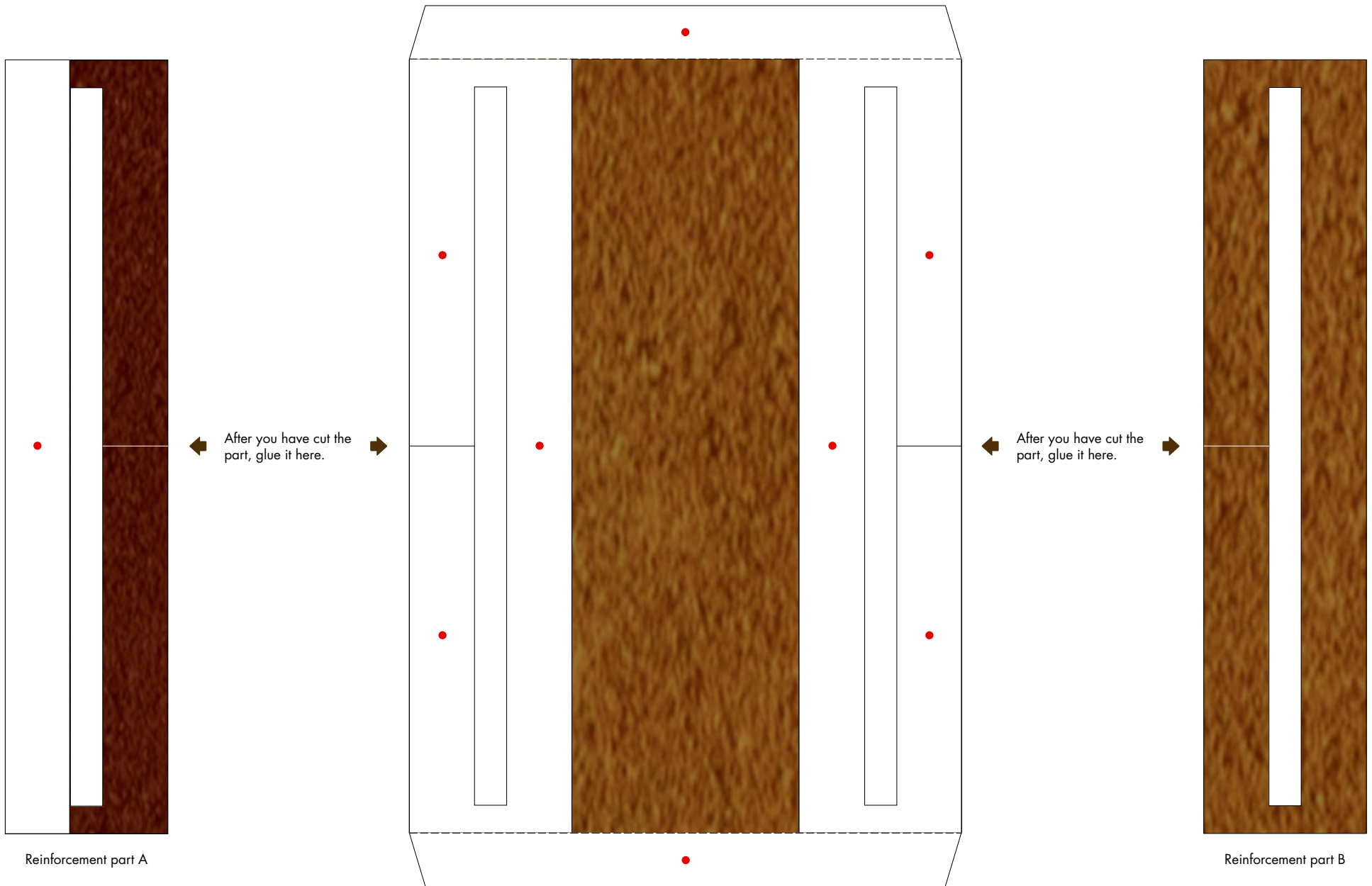
Main body



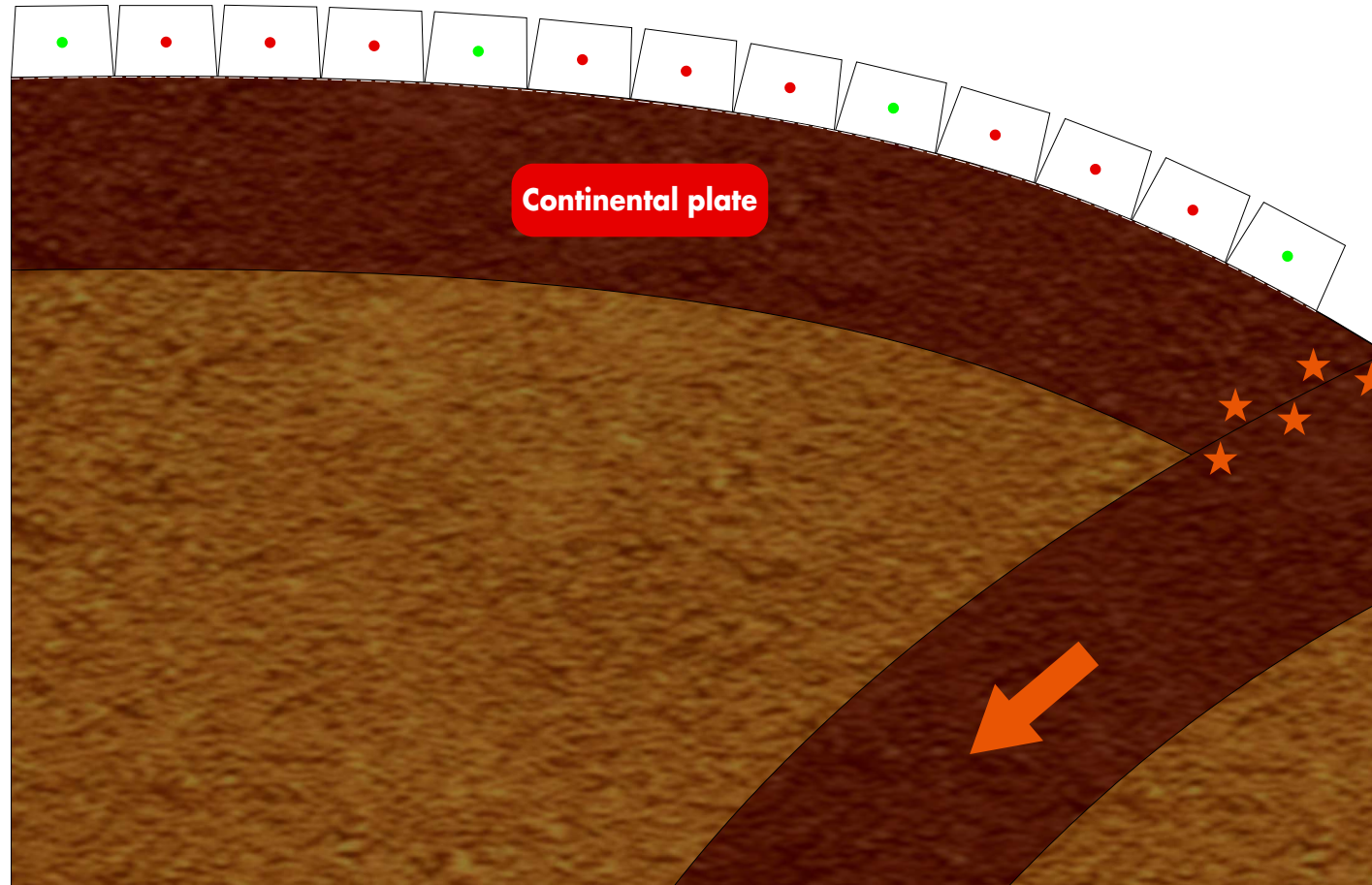
Reinforcement part C



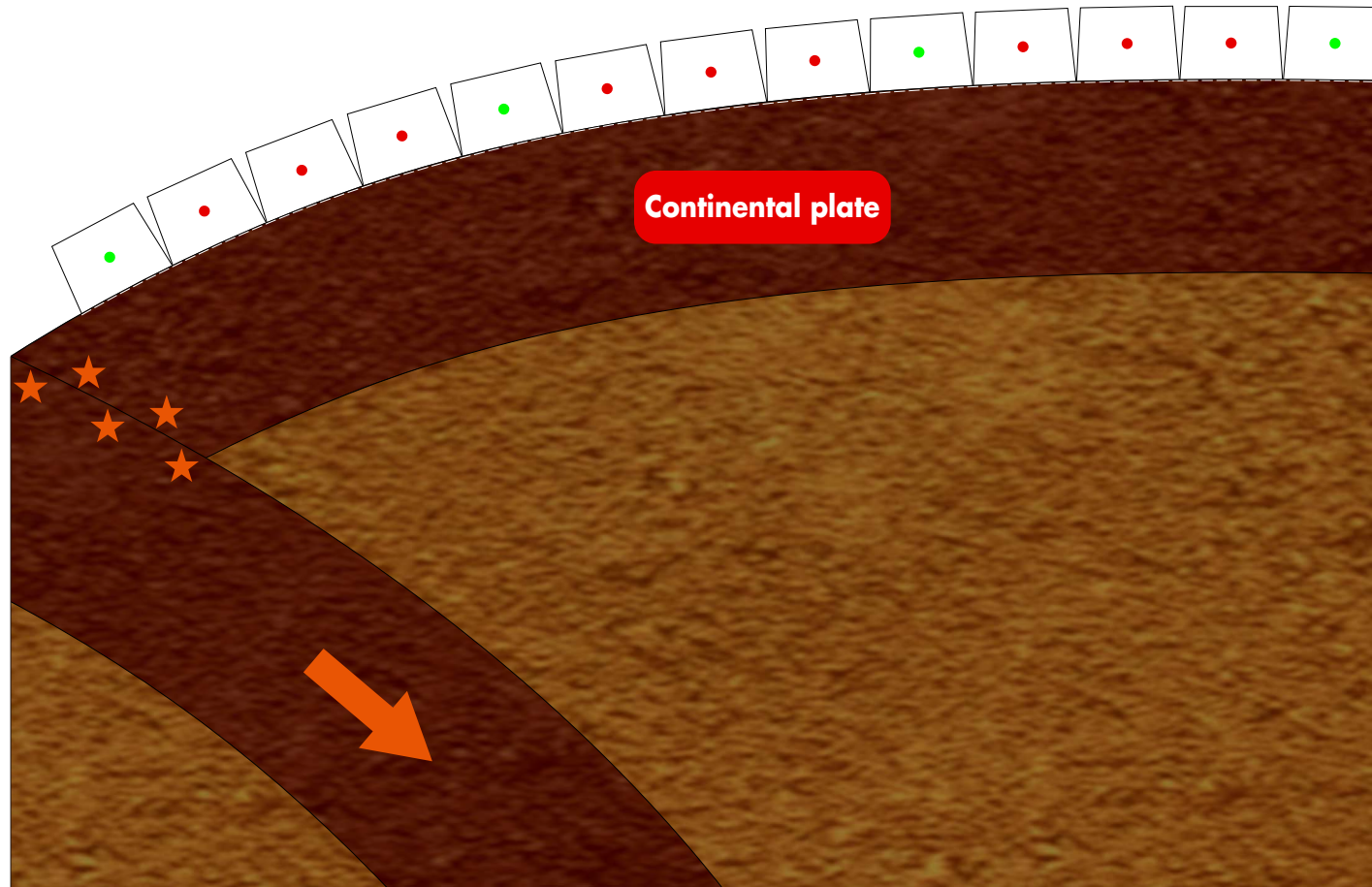
Main body



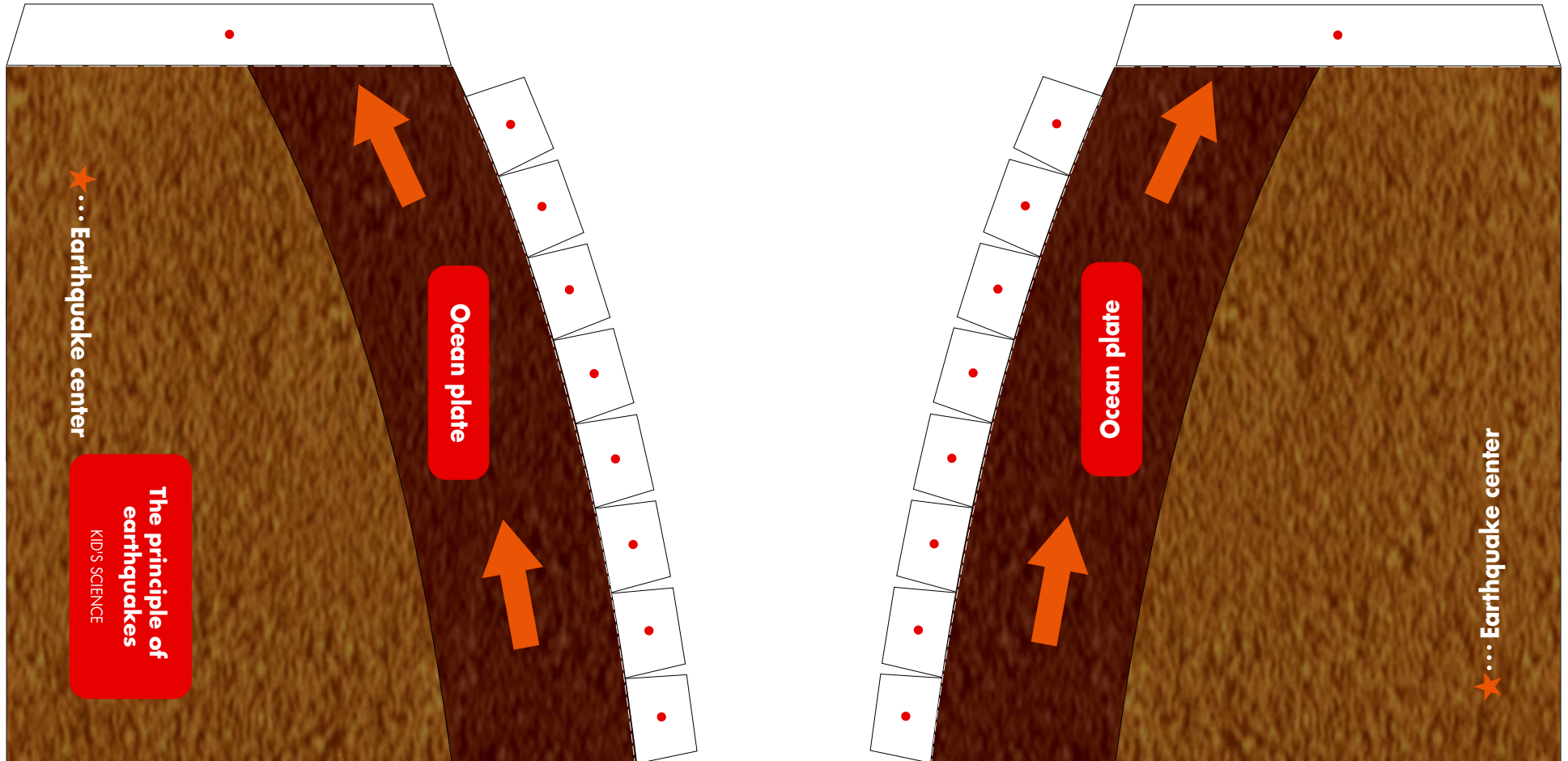
Main body



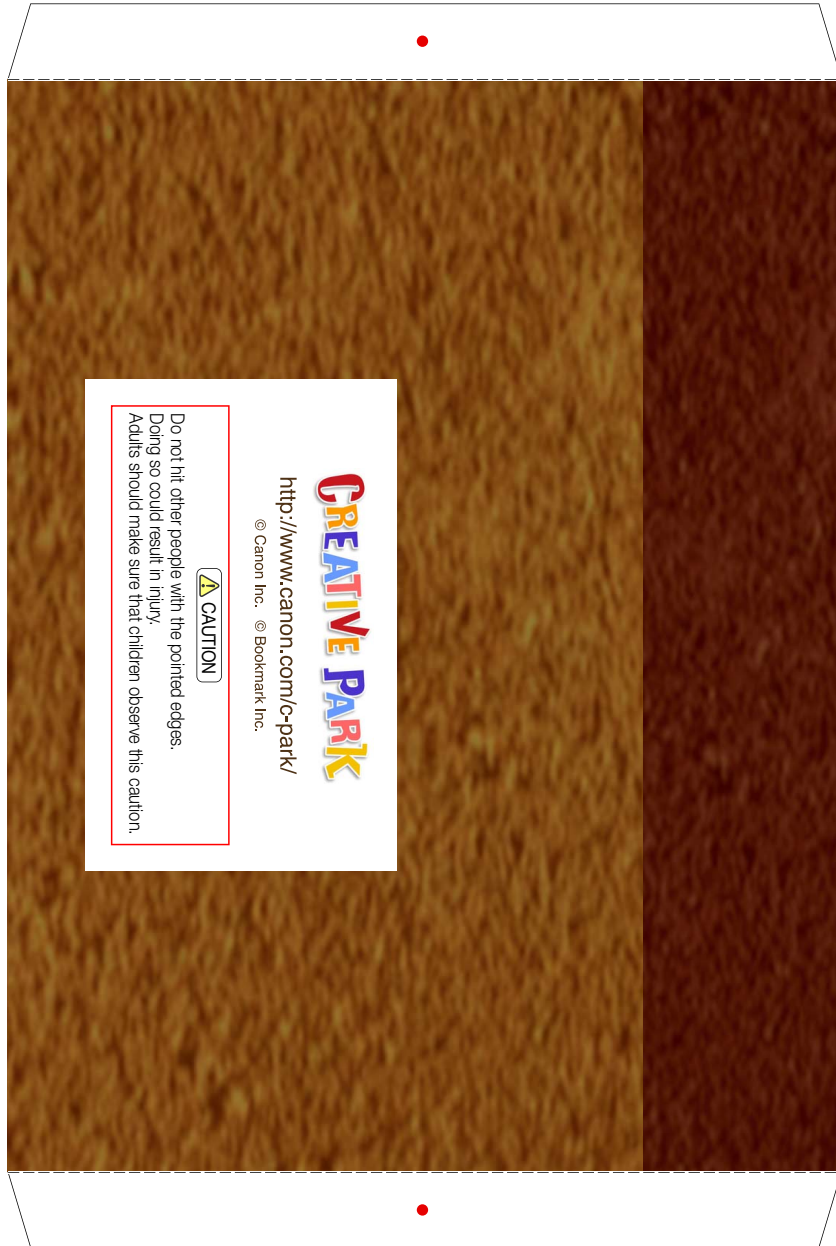
Main body



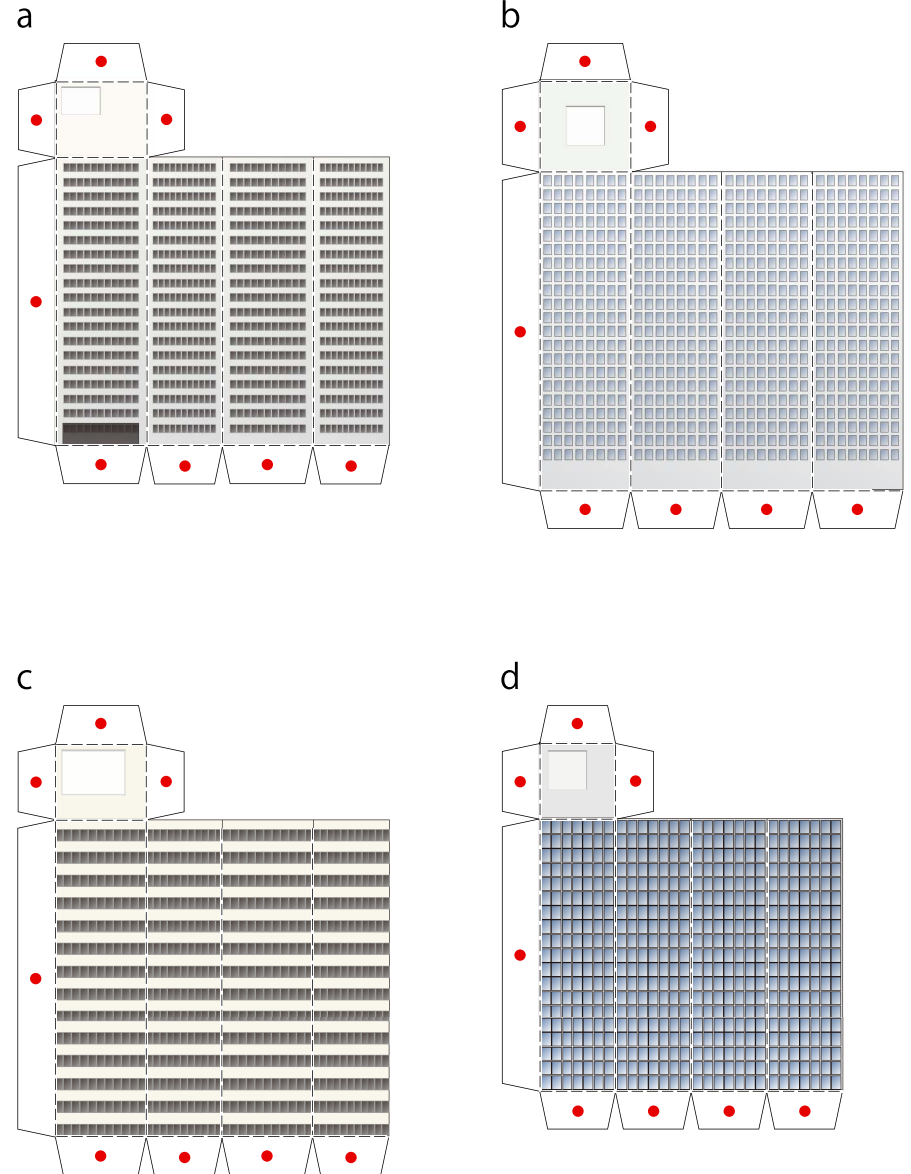
Main body



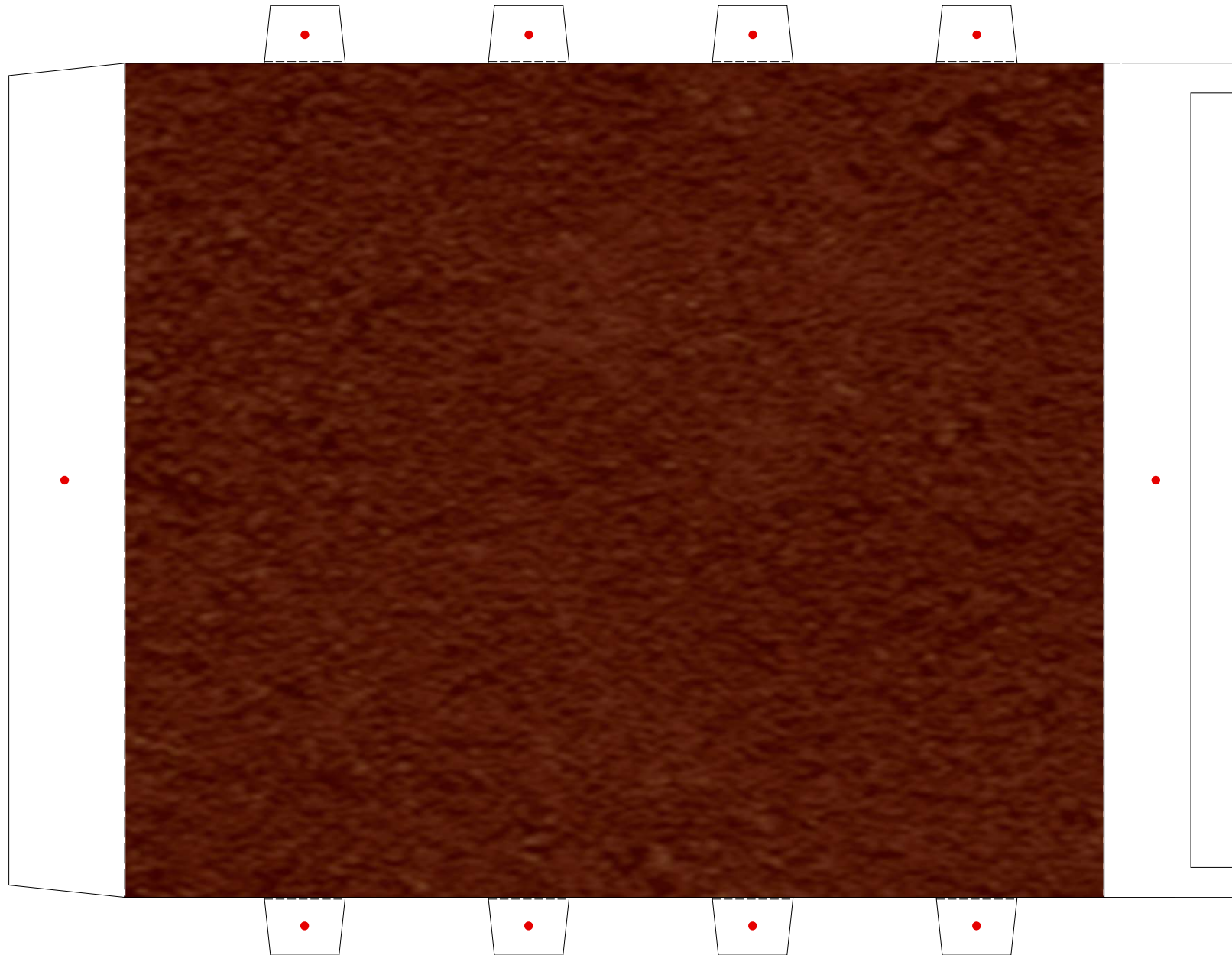
Main body



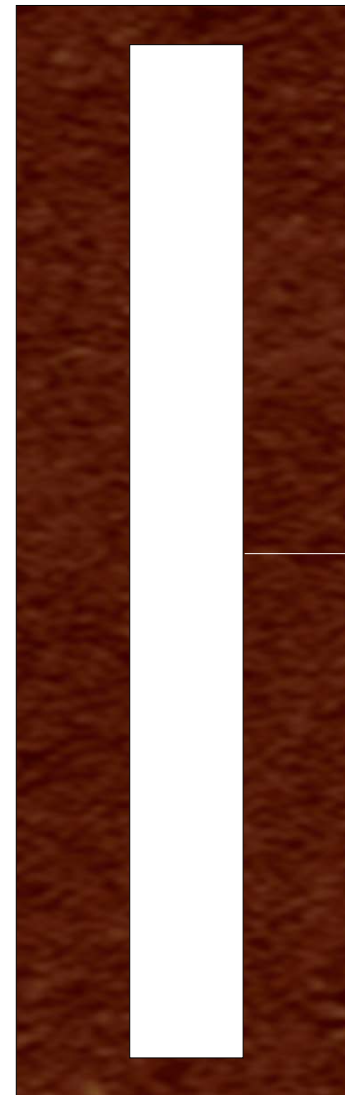
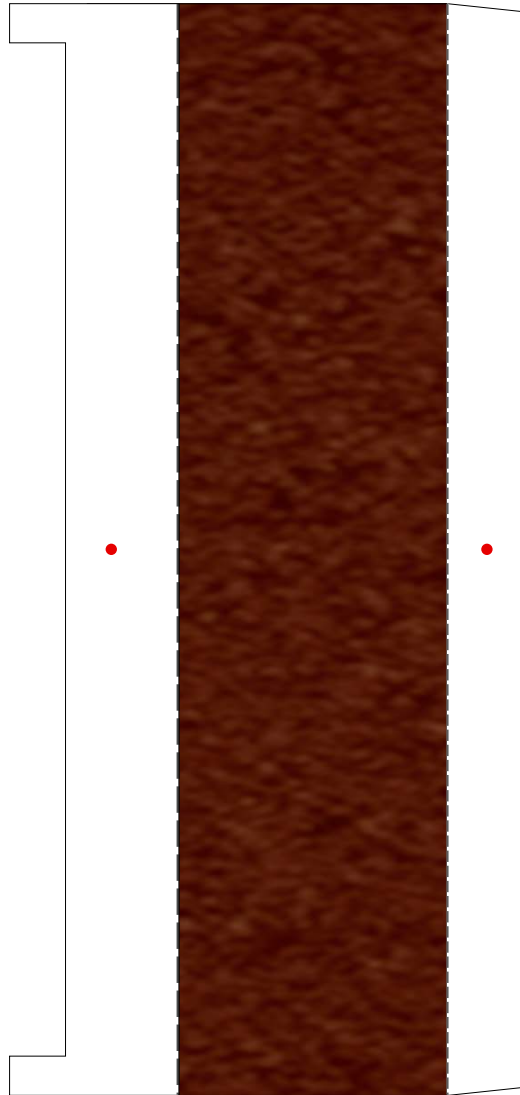
Building



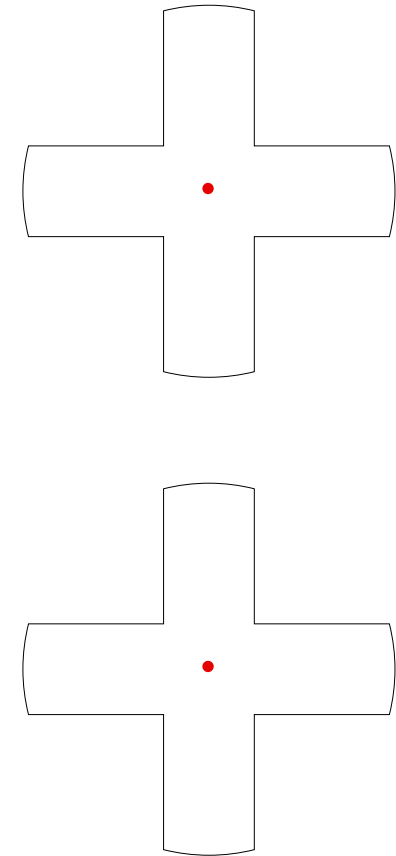
Ocean plate (fixed part)



Ocean plate (fixed part)

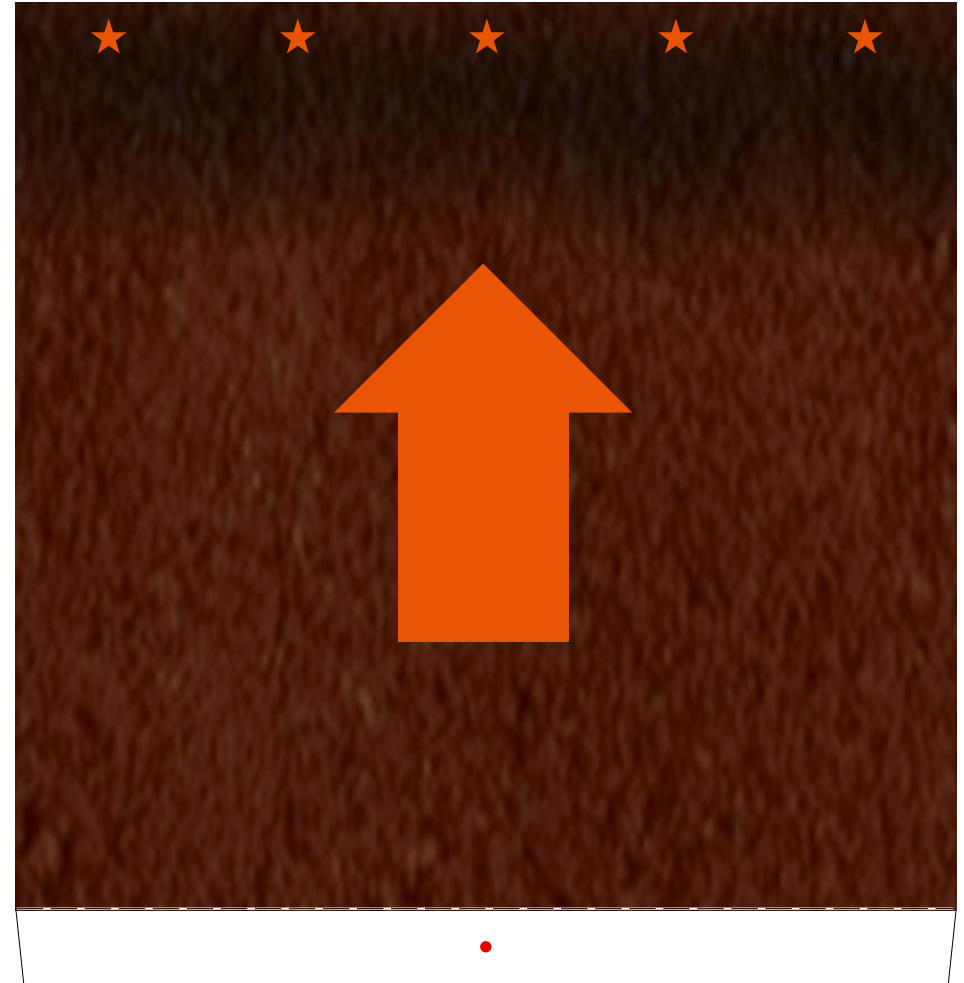
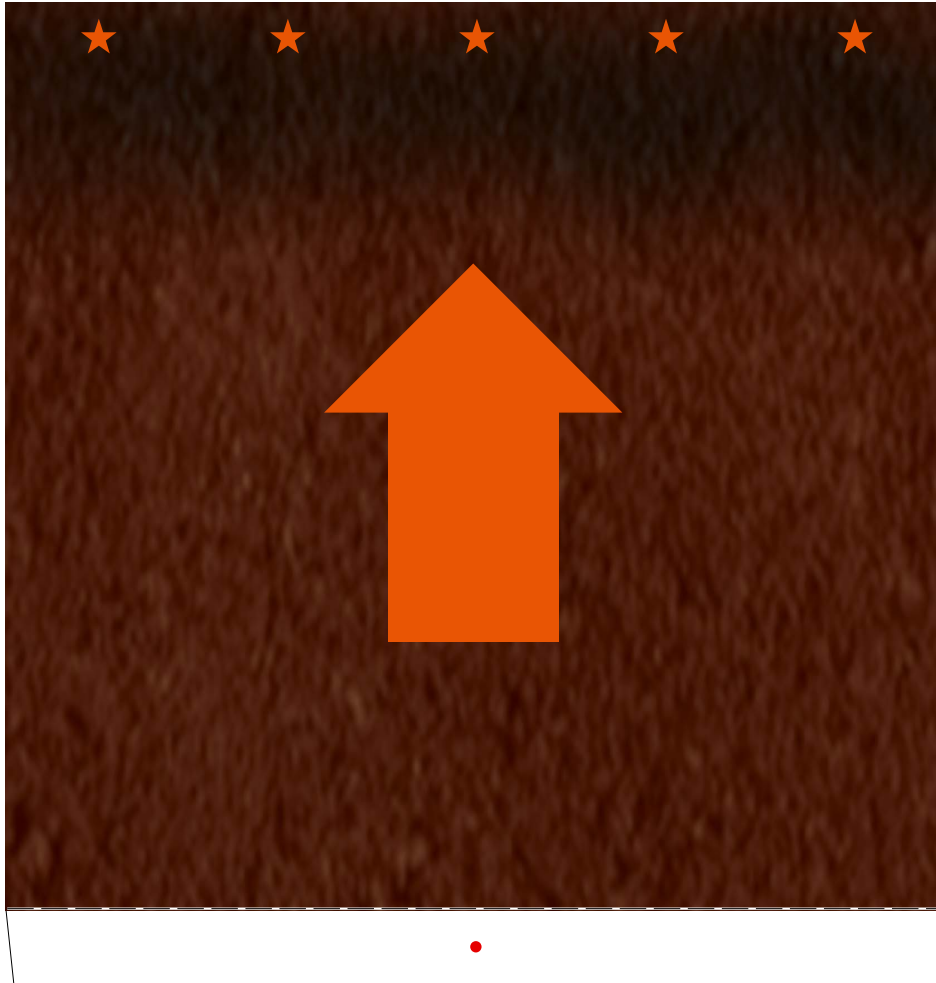


Reinforcement part D

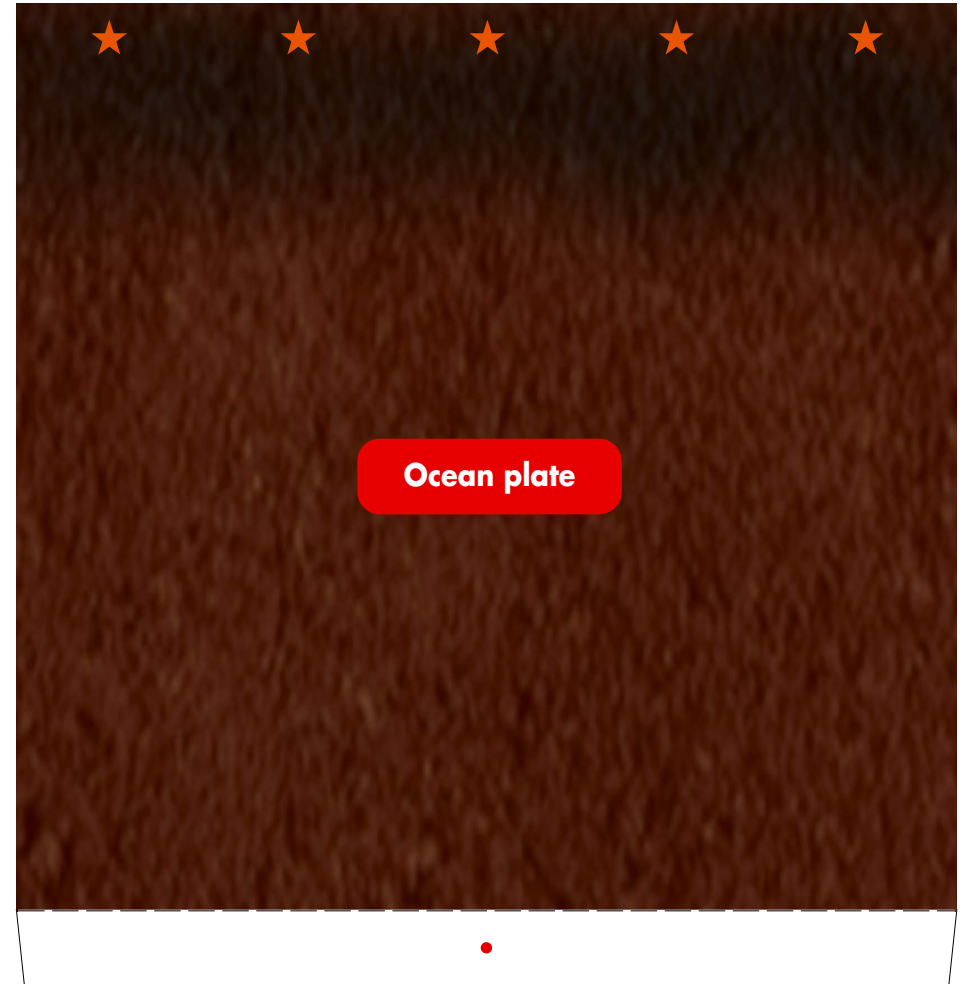
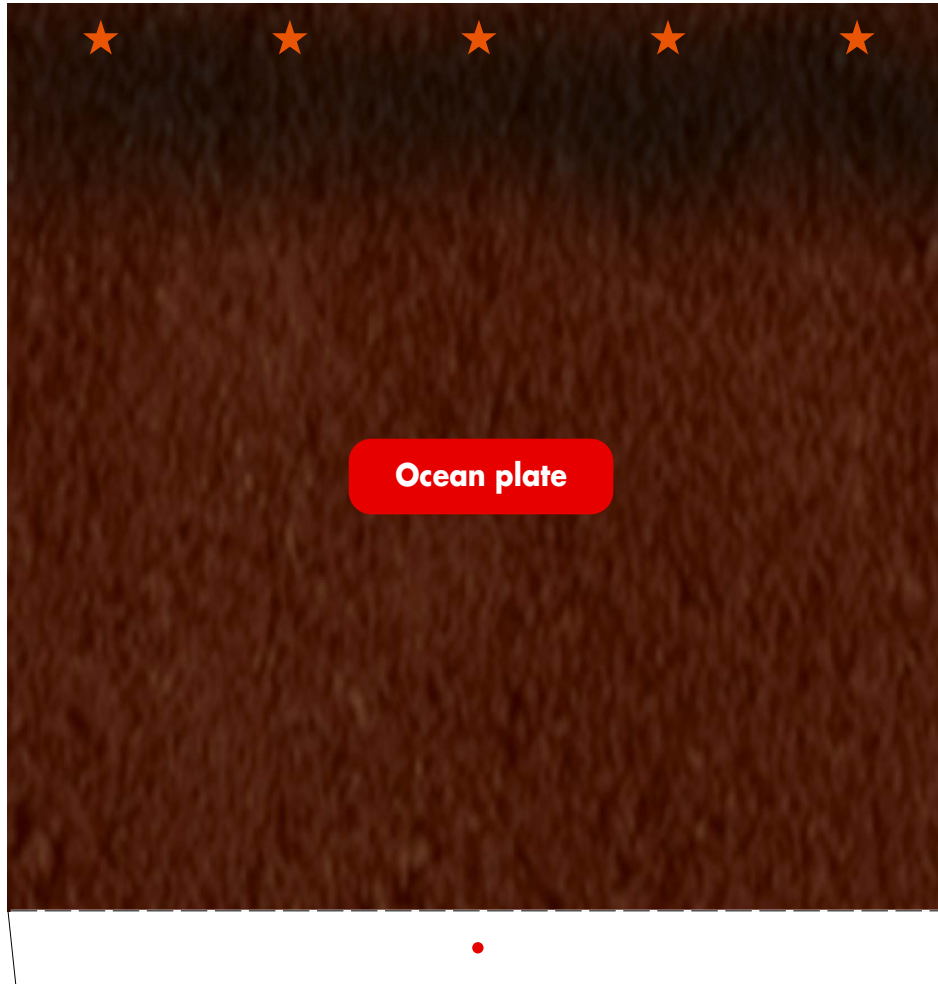


Reinforcement part E

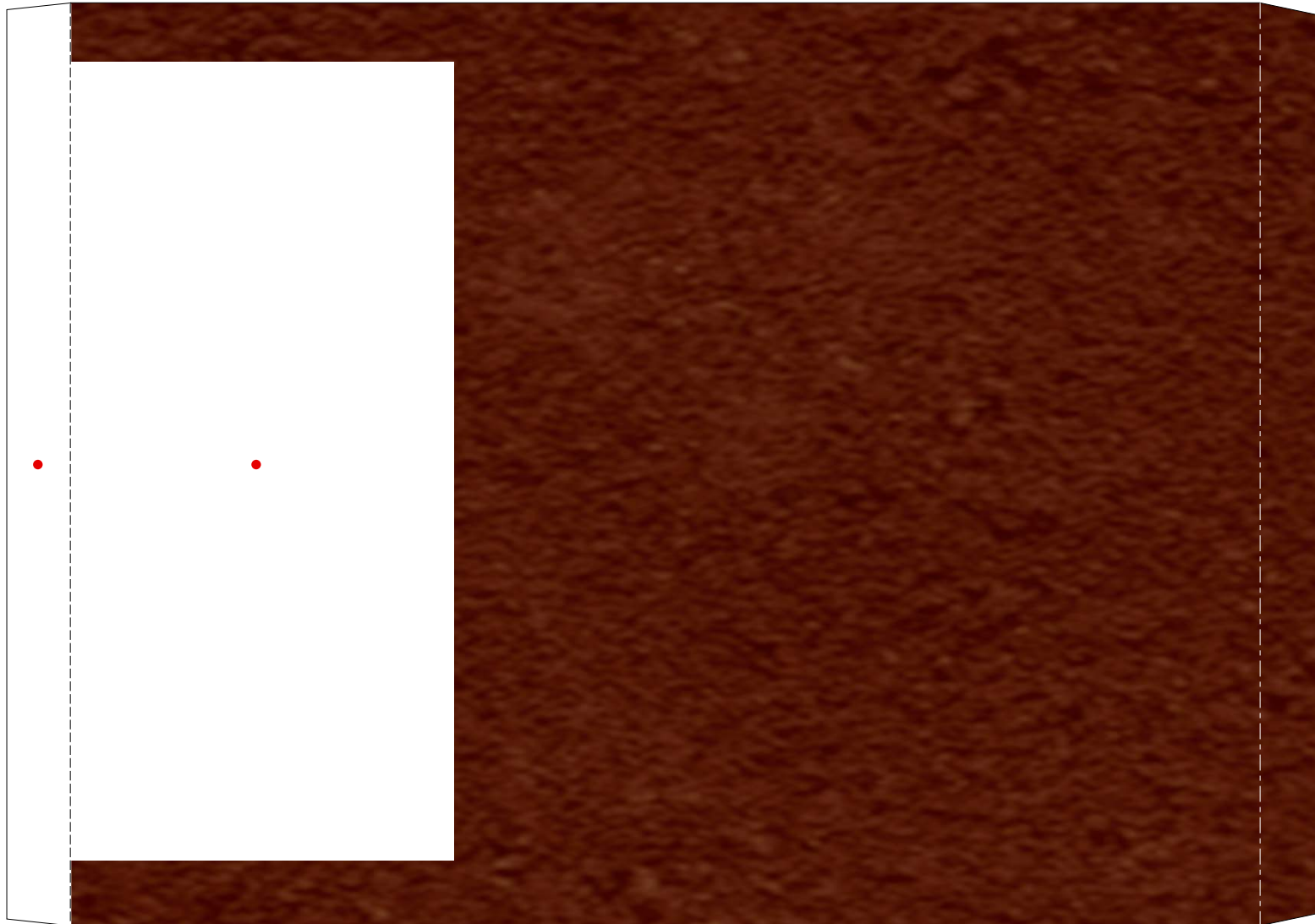
Ocean plate (movable part)



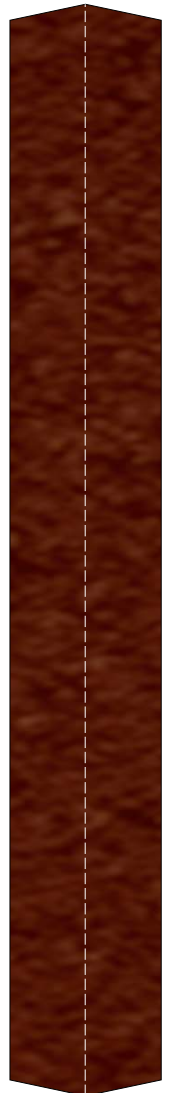
Ocean plate (movable part)



Continental plate



Crease it and then
glue the rear sides
together.



Reinforcement part F

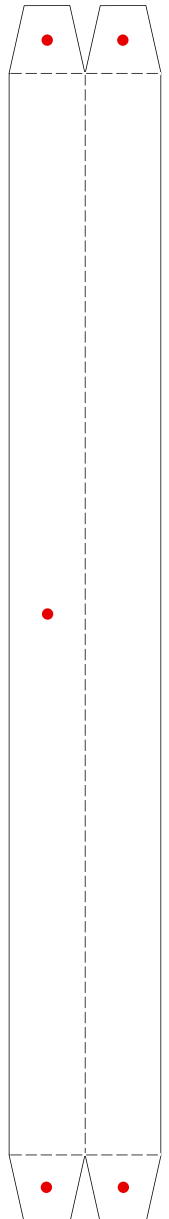
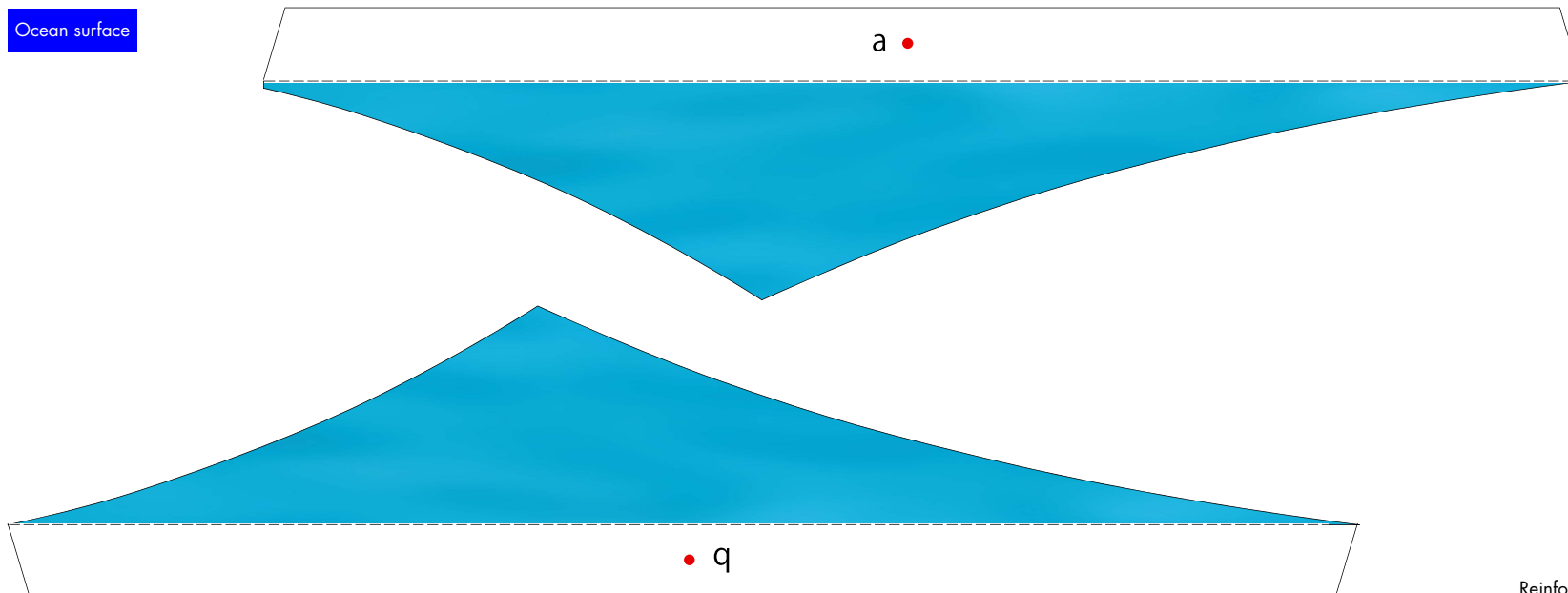
Continental plate



Continental plate



Ocean surface



Reinforcement part G

Ocean surface

